


CMX-2000 TRAKTOR PRO 2

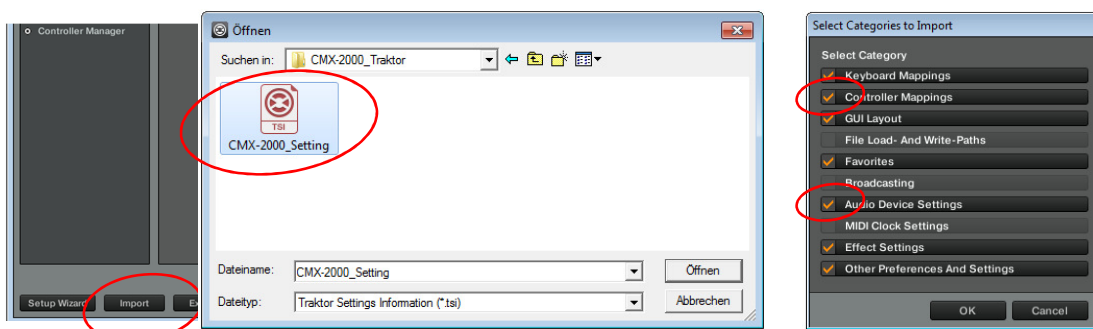


MAPPING GUIDE

Prior to using Traktor PRO 2, you will need to install the ASIO driver (→user manual, chapter 7) under Windows and configure the software for use with the CMX-2000.

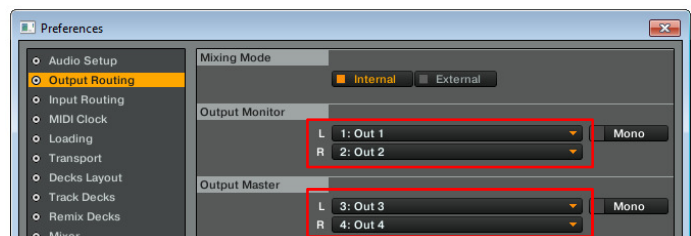
Import Mapping

- 1 Download the Traktor PRO 2 mapping from the internet: www.omnitronic.de → download section of the product. Copy and extract the file to your computer (e.g. your desktop).
- 2 Turn on the CMX-2000 and open Traktor PRO 2. Open the Preference menu with the  icon or **[File/Preferences]**.
- 3 Click Import and load the file **CMX-2000_Setting.tsi**. Besides the mapping for the control elements of the CMX-2000, this file contains the appropriate audio settings (internal mixing mode). When prompted, select the categories **[Controller Mappings]** and **[Audio Device Settings]**. Then you can start working with the CMX-2000 right away.

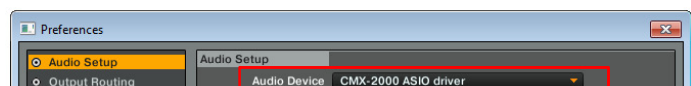


Audio Setup

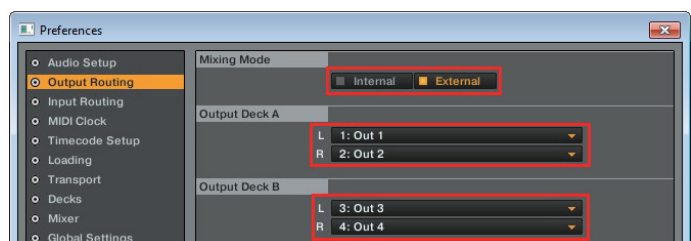
The basic setting of the mapping enables you to use Traktor's internal software mixer and the output channels Master and Monitor. The CMX-2000's input selectors [5] must be set to USB and the MIXER MIDI selector [29] to ON.



If necessary, go to **[Audio Setup]** to adjust the audio settings for the CMX-2000. Make sure **[CMX-2000 ASIO driver]** is selected as **[Audio Device]**.



Open **[Output Routing]** to adjust the output channels. Select the option **[External]** in order to use the CMX-2000 as your mixer instead of Traktor's internal software mixer. Then the left and right software deck is routed to its own audio channel which is then mixed together by the CMX-2000. The input selectors [5] must be set to USB and the MIXER MIDI selector [29] to OFF.

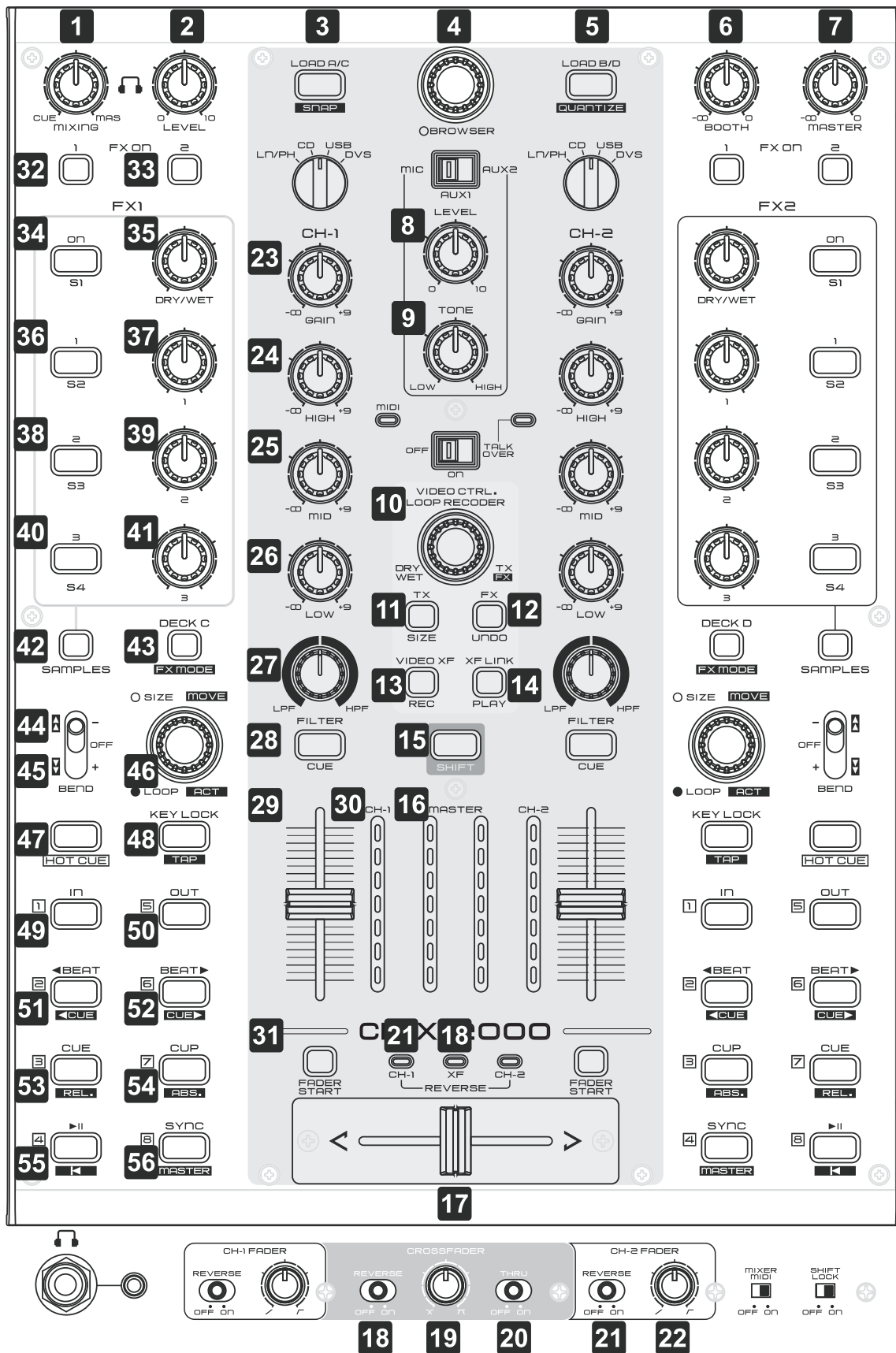


Open **[Input Routing]** to configure external audio devices as line inputs for Traktor. The audio signal of the devices is mixed to the master signal. The input selectors [5] must be set to DVS and the MIXER MIDI selector [29] to OFF.



Traktor PRO 2 Functions

After connecting the CMX-2000 and configuring Traktor PRO 2 properly, the system is ready for use.



No.	Control Element	Type	MIDI ch.	Function 1	Shift +	Sample Deck C/D	Shift +
1	CUE MIXING	VR	1	Selects monitoring signal.	-	-	-
2	CUE LEVEL	VR	1	Adjusts headphone volume.	-	-	-
3	LOAD A	SW/ LED	1	Load title selected.	Snap mode.	-	-
4	BROWSER (turn)	ENC	1	Scrolls through folders or titles.	Move list up/down.	-	-
	BROWSER (press)	SW	1	Toggle browser (M5).	Expand/collapse list.	-	-
5	LOAD B	SW/ LED	1	Load title selected.	Quantize mode.	-	-
6	BOOTH	VR	1	-	-	-	-
7	MASTER	VR	1	Adjusts master volume.	-	-	-
8	MIC LEVEL	VR	1	-	-	-	-
9	MIC TONE	VR	1	-	-	-	-
10	ENCODER (turn)	ENC	1	Loop recoder dry/wet.	-	-	-
	ENCODER (press)	SW	1	-	-	-	-
11	LOOP SIZE (TX)	SW/ LED	1	Loop recoder size.	-	-	-
12	UNDO (FX)	SW/ LED	1	Loop recoder undo/delete.	-	-	-
13	REC (VIDEO XF)	SW/ LED	1	Loop recoder record.	-	-	-
14	PLAY (XF LINK)	SW/ LED	1	Loop recoder play/pause.	-	-	-
15	SHIFT	SW/ LED	1	Activates secondary functions for other control elements.	-	-	-
16	MASTER METER L	VU VR	LED 1	VU meter left master signal.	-	-	-
	MASTER METER R	VU VR	LED 1	VU meter right master signal.	-	-	-
17	CROSSFADER	VR	1	Crossfader.	-	-	-
18	CROSSFADER REVERSE	SW/ LED	1	-	-	-	-
19	CROSSFADER CURVE	VR	1	Adjusts crossfader characteristic.	-	-	-
20	CROSSFADER THRU	SW/ LED	1	-	-	-	-
21	CHANNEL FADER REVERSE	SW/ LED	1/2	-	-	-	-
22	CHANNEL FADER CURVE	VR	1/2	-	-	-	-
23	GAIN	VR	1/2	Adjusts gain.	-	Adjusts gain.	-
24	EQ HIGH	VR	1/2	Adjusts highs.	-	Adjusts highs.	-
25	EQ MID	VR	1/2	Adjusts mids.	-	Adjusts mids.	-
26	EQ LOW	VR	1/2	Adjusts lows.	-	Adjusts lows.	-
27	FILTER	VR	1/2	Adjusts notch filter.	-	Adjusts notch filter.	-
28	CUE	SW/ LED	1/2	Selects deck for Monitoring.	-	Selects deck f/ monitoring.	-
29	CHANNEL FADER	VR	1/2	Adjusts deck volume level.	-	Adjusts deck volume level.	-
30	CHANNEL METER	LED VR	1/2	PFL level meter left/right.	-	PFL level meter left/right.	-

31	FADER START	SW/ LED	1/2	Auto crossfade left/right.	-		Auto crossfade left/right.	-
32	FX 1 ON	SW/ LED	1/2	Effect unit 1 on.	-		Effect unit 1 on.	-
33	FX 2 ON	SW/ LED	1/2	Effect unit 2 on.	-		Effect unit 2 on.	-
34	FX ON	SW/ LED	1/2	S: effect on.	-		-	-
35	FX DRY/WET	VR	1/2	Effect dry/wet.	S: effect select.	-	-	-
36	FX BUTTON 1	SW/ LED	1/2	S: reset. G: effect 1 on.	G: effect 1 select.	-	-	-
37	FX CONTROL 1	VR	1/2	S: parameter 1. G: effect 1 Amount.	-	-	-	-
38	FX BUTTON 2	SW/ LED	1/2	S: reset. G: effect 2 on.	G: effect 2 select.	-	-	-
39	FX CONTROL 2	VR	1/2	S: parameter 2. G: effect 2 amount.	-	-	-	-
40	FX BUTTON 3	SW/ LED	1/2	S: reset. G: effect 3 on.	G: effect 3 select.	-	-	-
41	FX CONTROL 3	VR	1/2	S: parameter 3. G: effect 3 amount.	-	-	-	-
42	SAMPLER	SW/ LED	1/2	Activates sampler.	-	-	-	-
34	SAMPLE 1 ON	SW/ LED	1/2	Load from deck (M5=1 list).	Copy from recorder.	loop	Slot 1 retrigger.	Clear slot.
35	SAMPLE 1 VOL	VR	1/2	Slot 1 volume.	-		Slot 1 volume.	-
36	SAMPLE 2 ON	SW/ LED	1/2	Load from deck (M5=1 list).	Copy from recorder.	loop	Slot 2 retrigger.	Clear slot.
37	SAMPLE 2 VOL	VR	1/2	Slot 2 volume.	-		Slot 2 volume.	-
38	SAMPLE 3 ON	SW/ LED	1/2	Load from deck (M5=1 list).	Copy from recorder.	loop	Slot 3 retrigger.	Clear slot.
39	SAMPLE 3 VOL	VR	1/2	Slot 3 volume.	-		Slot 3 volume.	-
40	SAMPLE 4 ON	SW/ LED	1/2	Load from deck (M5=1 list).	Copy from recorder.	loop	Slot 4 retrigger.	Clear slot.
41	SAMPLE 4 VOL	VR	1/2	Slot 4 volume.	-		Slot 4 volume.	-
43	DECK SWITCH	SW/ LED	1/2	Modifier 1/2.	FX panel mode (single/group).		Modifier 1/2.	FX panel mode (single/group).
44	PITCH -	SW	1/2	Decreases pitch.	Fast forward.	-	-	-
45	PITCH +	SW	1/2	Increases pitch.	Fast backward.	-	-	-
46	LOOP SIZE	ENC	1/2	Sets loop length.	Move point/loop.	cue	-	-
	LOOP ACTIVE	SW	1/2	Start/stop loop.	Move point/loop mode.	cue	-	-
48	KEY LOCK	SW/ LED	1/2	Key lock on/off.	Sets manually.	BPM	-	-
49	LOOP IN	SW/ LED	1/2	Set loop in point.	-	-	-	-
50	LOOP OUT	SW/ LED	1/2	Set loop end point.	-	-	-	-
51	◀ BEAT	SW/ LED	1/2	Jump backward.	Jump to previous cue point.	-	-	-
52	BEAT ▶	SW/ LED	1/2	Jump forward.	Jump to next cue point.	-	-	-
53	CUE	SW/ LED	1/2	Jump to cue point.	Timecode Relative	mode: Group cue	-	-
54	CUP	SW/ LED	1/2	Jump to cue point and start play.	Timecode absolut	mode: -	-	-

55	PLAY/PAUSE (▶)	SW/ LED	1/2	Playback/pause.	Jump to first cue point.	Group Play	-	
56	SYNC	SW/ LED	1/2	Synchronizes BPM.	Select deck as master.	-	-	
47	HOT CUE	SW/ LED	1/2	Activates hot cue.	-	-	-	
49	HOT CUE 1	SW/ LED	1/2	Sets/calls hot cue point 1.	Deletes hot cue point 1.	-	-	
50	HOT CUE 5	SW/ LED	1/2	Sets/calls hot cue point 5.	Deletes hot cue point 5.	-	-	
51	HOT CUE 2	SW/ LED	1/2	Sets/calls hot cue point 2.	Deletes hot cue point 2.	-	-	
52	HOT CUE 6	SW/ LED	1/2	Sets/calls hot cue point 6.	Deletes hot cue point 6.	-	-	
53	HOT CUE 3	SW/ LED	1/2	Sets/calls hot cue point 3.	Deletes hot cue point 3.	-	-	
54	HOT CUE 7	SW/ LED	1/2	Sets/calls hot cue point 7.	Deletes hot cue point 7.	-	-	
55	HOT CUE 4	SW/ LED	1/2	Sets/calls hot cue point 4.	Deletes hot cue point 4.	-	-	
56	HOT CUE 8	SW/ LED	1/2	Sets/calls hot cue point 8.	Deletes hot cue point 8.	-	-	